

CHAPTER

77

ENGINE INDICATING

CESSNA®
MODEL 208
 ILLUSTRATED PARTS CATALOG

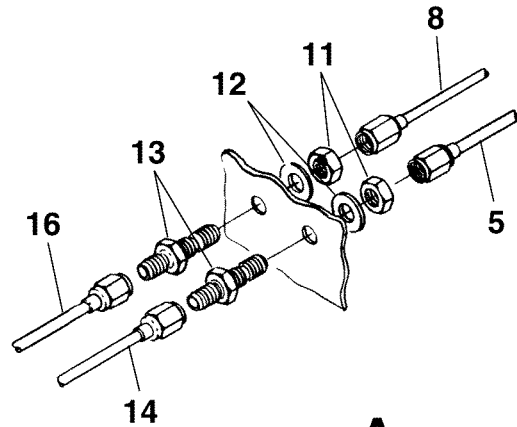
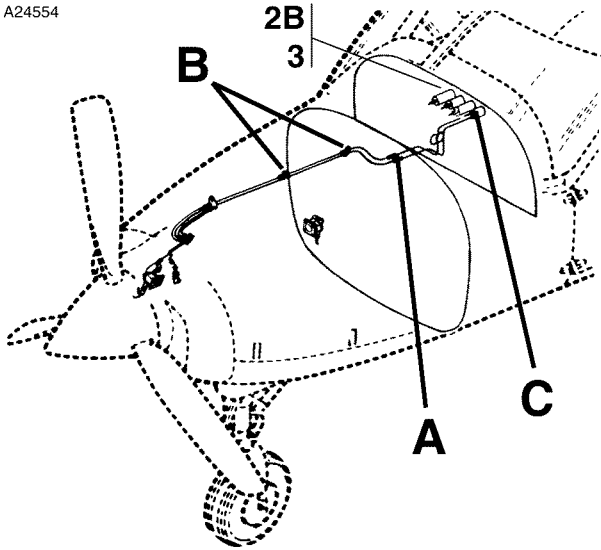
CHAPTER SECTION SUBJECT		NUMBER OF PAGES	DATE
77 - TITLE			
77 - LIST OF EFFECTIVE PAGES			
77 - RECORD OF TEMPORARY REVISIONS			
77 - TABLE OF CONTENTS			
77-11-00	Figure 01	4	Sep 1/2016
77-11-00	Figure 02	2	Mar 1/2017
77-12-00	Figure 01	4	Mar 1/2020
77-12-00	Figure 02	2	Dec 1/2013
77-12-00	Figure 03	2	Mar 1/2015
77-13-00	Figure 01	2	Sep 1/2017
77-14-00	Figure 01	2	Sep 1/2017
77-15-00	Figure 01	2	Dec 1/2012
77-21-00	Figure 01	2	Sep 1/2017
77-30-00	Figure 01	2	Mar 1/2015
77-30-00	Figure 02	2	Mar 1/2019
77-30-00	Figure 03	2	Sep 1/2019
77-40-00	Figure 01	2	Mar 1/2020

CESSNA®
MODEL 208
 ILLUSTRATED PARTS CATALOG

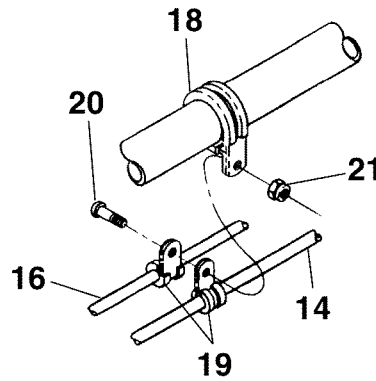
<u>SUBJECT</u>	<u>CHAPTER SECTION SUBJECT</u>	<u>FIGURE</u>	<u>EFFECTIVITY</u>	
			<u>START</u>	<u>END</u>
WET TORQUE INDICATING SYSTEM	77-11-00	01		
WET TORQUE INDICATING SYSTEM	77-11-00	02	B5000	& ON
ELECTRICAL TORQUE INDICATING SYSTEM	77-12-00	01		
TORQUE TRANSMITTER INSTALLATION	77-12-00	02	0382 B1087	0499 B1999
TORQUE TRANSMITTER INSTALLATION - FDR & CVR	77-12-00	03	0417 B1052	& ON & ON
PROPELLER RPM INDICATING SYSTEM	77-13-00	01		
GAS GENERATOR RPM INDICATOR SYSTEM	77-14-00	01		
TACHOMETER GENERATOR INSTALLATION	77-15-00	01	B5000	& ON
INTER-TURBINE TEMPERATURE INDICATOR	77-21-00	01	0001 B0001	0499 B1999
ALTAIR ENGINE TREND MONITORING (ETM) COMPONENT INSTALLATION	77-30-00	01	0500 B2000	& ON B4999
FAST ENGINE TREND MONITORING (ETM) COMPONENT INSTALLATION	77-30-00	02	B5000	& ON
ADAS PLUS PROCESSOR INSTALLATION	77-30-00	03	0382 B1087	& ON & ON
GEA-71 ENGINE INTERFACE UNIT INSTALLATION	77-40-00	01	0500 B2000	& ON & ON

CESSNA®
MODEL 208
 ILLUSTRATED PARTS CATALOG

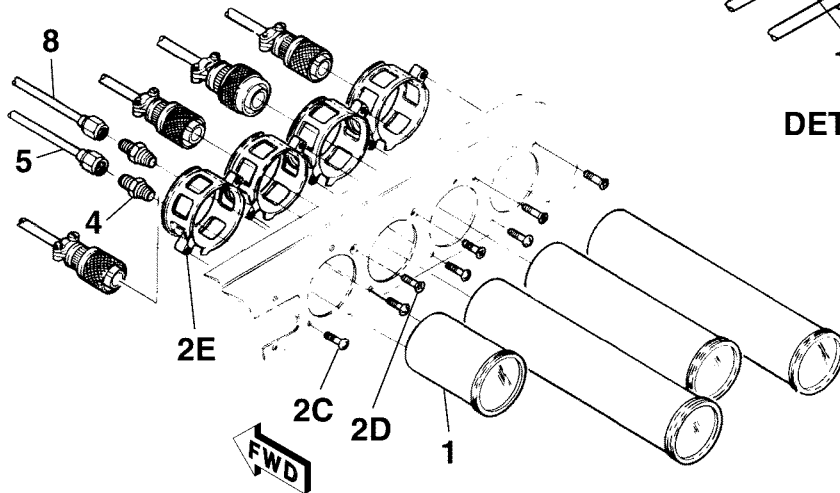
A24554



DETAIL A



DETAIL B



DETAIL C

WET TORQUE INDICATING SYSTEM
 FIGURE 01 (SHEET 1)

2655R1004
 A2655R1008
 B2655R1007
 C2655R2002

CESSNA®
MODEL 208
ILLUSTRATED PARTS CATALOG

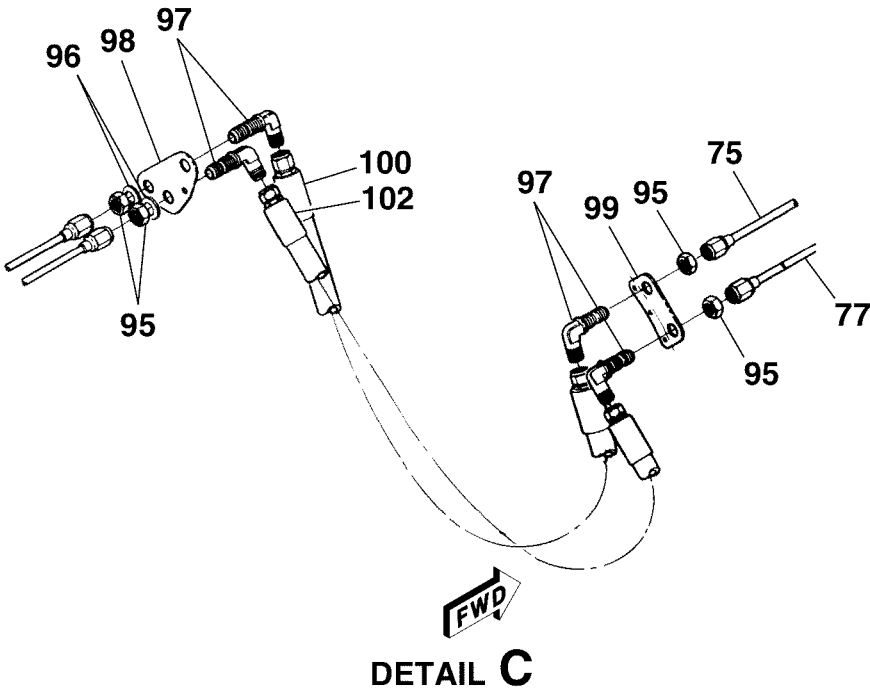
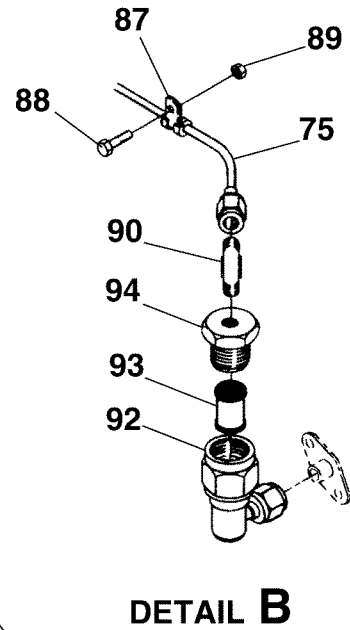
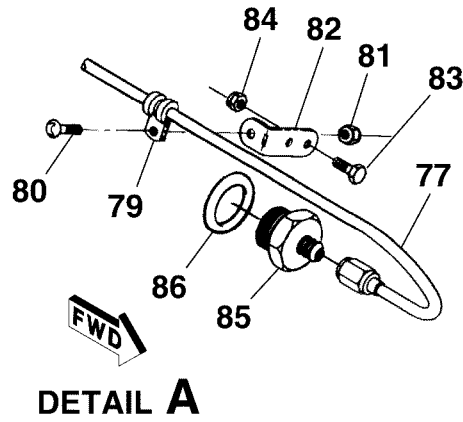
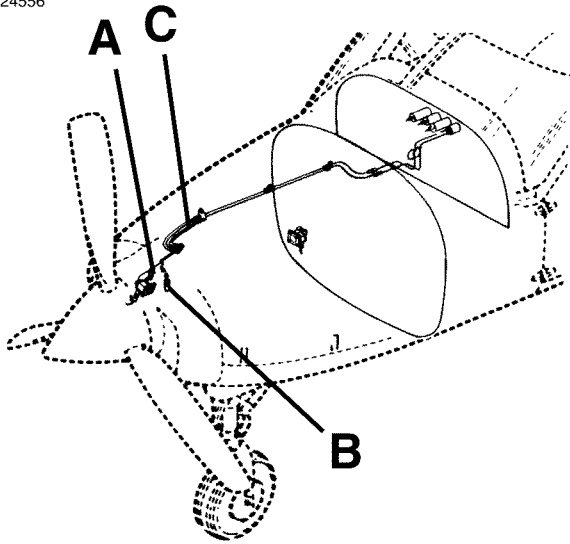
FIG ITEM	PART NUMBER	NOMENCLATURE	UNITS PER ASSY		
			1	2	3
01		WET TORQUE INDICATING SYSTEM			RF
-					
1	2606011-1	. TORQUE INDICATOR-MECHANICAL FSO 2606011-2	0001	0050	NP
- 2	2606011-2	. TORQUE INDICATOR MECHANICAL	0051	0276	01
			B0045	B0229	
- 2A	2606011-3	. TORQUE INDICATOR MECHANICAL	0277	0499	01
			B0230	B1999	
2B	MD82-4	. TORQUE INDICATOR MECHANICAL EI005 V59742	0500	& ON	01
			B2000	B4999	
		ATTACHING PARTS			
2C	MS24693BB50	. SCREW	0001	0499	01
			0499	B1999	
2D	MS35214-43	. SCREW	0001	0499	01
			0499	B1999	
2E	MS28042-1A	. CLAMP	0001	0499	01
			0499	B1999	
- 2F	MS24693-BB30	. SCREW			04
		—*—			
3	S3312-1	. LIGHT ASSY V59742			01 R
4	AS5194-0402	. ADAPTER	0001	0499	02
			B0001	B1999	
- 4A	AS5194D0402	. ADAPTER	0500	& ON	02
			B2000	& ON	
5	2606016-1	. LINE ASSY-TORQUE VENT GAGE TO FIREWALL FSO 2606016-13 REFER TO NOTE 1	0001	0050	NP
- 6	2606016-7	. LINE ASSY-TORQUE VENT GAGE TO FIREWALL FSO 2606016-13 REFER TO NOTE 2	0051	0154	NP
- 7	2606016-13	. LINE ASSY-TORQUE VENT GAGE TO FIREWALL	0155	0499	01
			B0180	B1999	
- 7A	S3309B0260-000E	. HOSE ASSY-TORQUE VENT GAGE TO FIREWALL	0500	& ON	01
			B2000	& ON	
8	2606016-2	. LINE ASSY-TORQUE PRESS GAGE TO FIREWALL FSO 2606016-16 REFER TO NOTE 1	0001	0050	NP
- 9	2606016-8	. LINE ASSY-TORQUE PRESS GAGE TO FIREWALL FSO 2606016-16 REFER TO NOTE 2	0051	0154	NP
- 10	2606016-14	. LINE ASSY-TORQUE PRESS GAGE TO FIREWALL FSO 2606016-16	0155	0319	NP
			B0180	B0821	
- 10A	2606016-16	. LINE ASSY-TORQUE PRESS GAGE TO FIREWALL	0320	0499	01
			B0822	B1999	
- 10B	S3309B0260-000E	. HOSE ASSY-TORQUE PRESS GAGE TO FIREWALL	0500	& ON	01
			B2000	& ON	
11	AS5178-04	. NUT			02 R
12	NAS1149F0732P	. WASHER			02
13	AN832-4	. UNION			02
14	2600101-58	. LINE ASSY-TORQUE VENT FIREWALL TO HOSE FSO 2600101-25	0001	0191	NP
			B0001	B0221	
- 15	2600101-25	. LINE ASSY-TORQUE VENT FIREWALL TO HOSE	0192	& ON	01
			B0222	& ON	
16	2600101-57	. LINE ASSY-TORQUE PRESS FIREWALL TO HOSE FSO 2600101-24	0001	0191	NP
			B0001	B0221	
- 17	2600101-24	. LINE ASSY-TORQUE PRESS FIREWALL TO HOSE	0192	& ON	01
			B0222	& ON	
18	MS21919DG16	. CLAMP			02
19	MS21919WDG4	. CLAMP			04
		ATTACHING PARTS			
20	MS35207-265	. SCREW			01
21	MS21044N3	. NUT			01
		—*—			

NOTE 1—AIRPLANES -0001 THRU -00050 NOT INCORPORATING SK208-16.

NOTE 2—AIRPLANES -0001 THRU -00050 INCORPORATING SK208-16.

CESSNA®
MODEL 208
 ILLUSTRATED PARTS CATALOG

A24556



WET TORQUE INDICATING SYSTEM
 FIGURE 01 (SHEET 2)

26551004
 A26551001
 B26551003
 C26552001

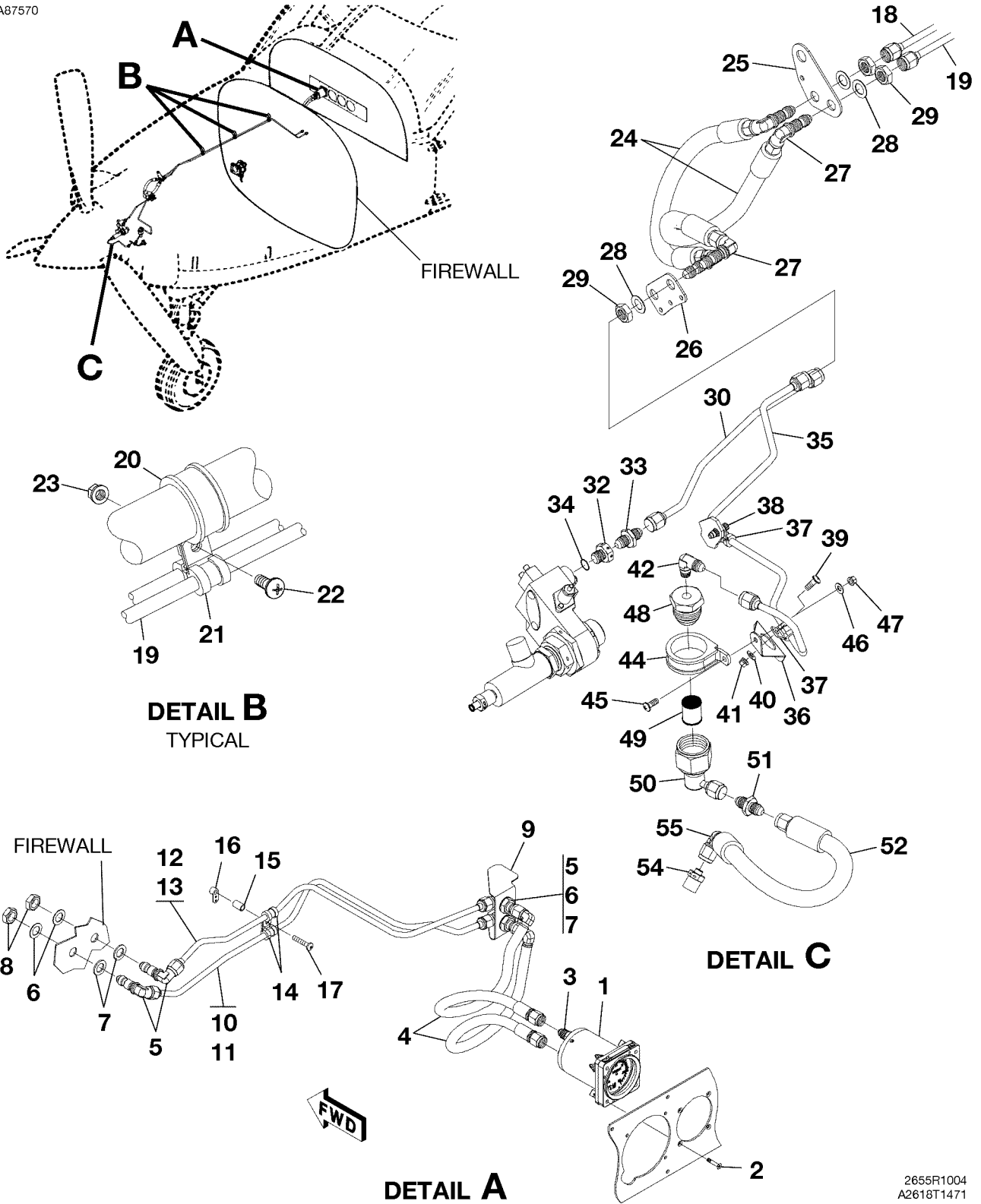
CESSNA®
MODEL 208
ILLUSTRATED PARTS CATALOG

FIG ITEM	PART NUMBER	NOMENCLATURE	UNITS PER ASSY		
			1	2	3
01					
75	2600101-56	. LINE ASSY-TORQUE VENT BRACKET TO SEPARATOR FSO 2600101-22 . . .	0001	0191	NP
- 76	2600101-22	. LINE ASSY-TORQUE VENT BRACKET TO SEPARATOR	B0001	B0221	
77	2600101-55	. LINE ASSY-TORQUE PRESS BRACKET TO REDUCER FSO 2600101-21 . . .	0192	& ON	01
- 78	2600101-21	. LINE ASSY-TORQUE PRESS BRACKET TO REDUCER	B0222	& ON	
79	MS21919WDG4	. CLAMP	0001	0191	NP
80	MS35207-264	. ATTACHING PARTS	B0001	B0221	
81	MS21044N3	. SCREW	0192	& ON	01
82	S2300-24	. NUT	B0222	& ON	
83	AN3-3A	. BRACKET	0001	0191	NP
84	MS21044N3	. ATTACHING PARTS	B0001	B0221	
85	5950017-11	. BOLT	0192	& ON	01
86	M83248/1-213	. NUT	B0222	& ON	
87	MS21919WDG4	. REDUCER ASSY-TORQUE PRESS	0001	0191	NP
88	AN3-3A	. O-RING	B0001	B0221	
89	MS21044N3	. CLAMP	0192	& ON	01
90	MS20822-4	. ATTACHING PARTS	B0222	& ON	
- 91	5950034-15	. ELBOW	0001	0191	NP
92	5950034-2	. SEPARATOR ASSY-TORQUE VENT	B0001	B0221	
93	204090-17	. BODY-SEPARATOR	0192	& ON	01
94	5950034-7	. BREATHER PAD-SEPARATOR	B0222	& ON	
95	AS5178-04	. ADAPTER-SEPARATOR	0001	0191	NP
96	NAS1149F0732P	. NUT	B0001	B0221	
97	AN833-4	. WASHER	0192	& ON	01
98	2650081-1	. ELBOW	B0222	& ON	
99	2650081-2	. BRACKET-TORQUE LINE ATTACH AFT	0001	0191	NP
100	S2808-4-0113	. BRACKET-TORQUE LINE ATTACH FWD	B0001	B0221	
- 101	AE3663161E0113	. HOSE ASSY-TORQUE VENT BRACKET TO BRACKET	0192	& ON	01
102	S2808-4-0113	. HOSE ASSY-TORQUE VENT BRACKET TO BRACKET ALT FOR	B0222	& ON	
- 103	AE3663161E0113	. HOSE ASSY-TORQUE VENT BRACKET TO BRACKET ALT FOR	0001	0191	NP

- ITEM NOT ILLUSTRATED

CESSNA®
MODEL 208
 ILLUSTRATED PARTS CATALOG

A87570



WET TORQUE INDICATING SYSTEM
 FIGURE 02 (SHEET 1)

2655R1004
 A2618T1471
 B2618T1471
 C2618T1471

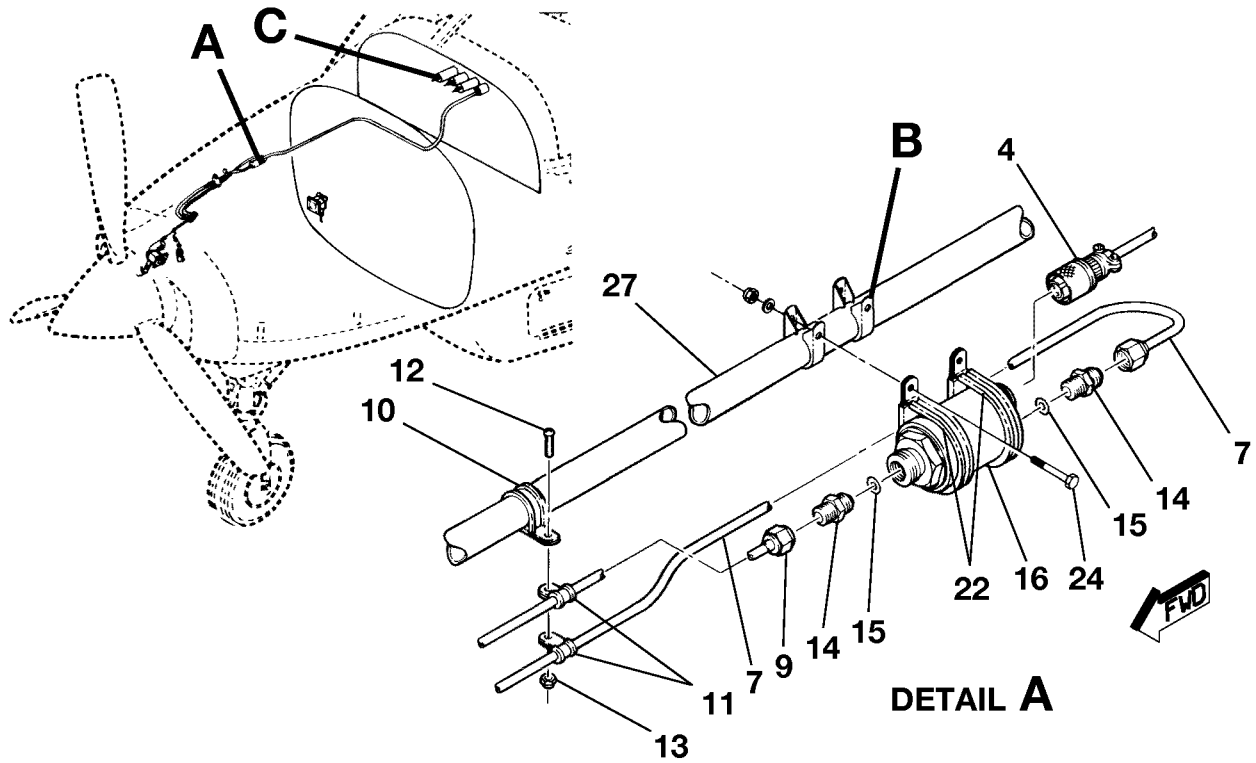
CESSNA®
MODEL 208
ILLUSTRATED PARTS CATALOG

FIG ITEM	PART NUMBER	NOMENCLATURE	1 2 3 4 5 6 7							UNITS PER ASSY
02		WET TORQUE INDICATING SYSTEM							B5000 & ON	RF
-										
1	2606011-6	. TORQUE INDICATOR EI005								01
		. ATTACHING PARTS								
2	MS24693-BB30	. SCREW								04
		—*—								
3	AS5194D0402	. ADAPTER						V81343		02
4	S3309C0154-000E	. HOSE ASSY								02
5	AN833-4J	. ELBOW								04
6	NAS1149F0732P	. WASHER-AFT SIDE								04
7	NAS1149F0763P	. WASHER-FWD SIDE								04
8	AS5178J04	. NUT								04
9	2606040-5	. BRACKET								01
10	2606040-6	. TUBE ASSY-PRESSURE								01
11	CM3582-7-3	. IDENT TAPE-PRESSURE								AR
12	2606040-7	. TUBE ASSY-VENT								01
13	CM3582-7-2	. IDENT TAPE-VENT								AR
14	MS21919WDF4	. CLAMP								02
15	NAS43-3-32	. SPACER								01
16	MS21071-3	. NUTPLATE								01
		. ATTACHING PARTS								
17	MS27039C1-16	. SCREW								01
		—*—								
18	2655001-11	. TUBE ASSY-TORQUE GAUGE								01
19	2655001-10	. TUBE ASSY-TORQUE GAUGE								01
		. ATTACHING PARTS								
20	MS21919WDG16	. CLAMP								04
21	MS21919WDG4	. CLAMP								05
22	MS35207-263	. SCREW								06
23	MS21042L3	. NUT								06
		—*—								
24	AE3663161E0113	. HOSE ASSEMBLY								02
- 24A	S2808-4-0113	. HOSE ASSY-ALT FOR AE3663161E0113								02
25	2650081-1	. BRACKET								01
26	2650081-2	. BRACKET								01
27	AN833-4J	. ELBOW								04
28	NAS1149C0763R	. WASHER								04 R
29	AS5178J04	. NUT								04
30	2655001-8	. TUBE ASSY-TORQUE GAUGE								01
- 31	6355003-6	. ORIFICE ASSY								01
32	JETA1875120D	. RESTRICTOR								01
33	6355003-7	. UNION								01
34	M83248/2-904	. O-RING								01
35	2655001-12	. TUBE ASSY								01
36	2655001-13	. BRACKET-OIL SEPARATOR								01
		. ATTACHING PARTS								
37	MS21919WDG4	. CLAMP								01
38		. ATTACHING HARDWARE SUPPLIED WITH ENGINE								RF
39	MS35207-263	. SCREW								01
40	NAS1149C0332R	. WASHER								01
41	MS21042L3	. NUT								01
- 41A	NAS1291-3	. NUT-ALT FOR MS21042L3								01
		—*—								
42	MS20822-4J	. ELBOW								01
- 43	2655001-16	. SEPARATOR ASSY								01
		. ATTACHING PARTS								
44	MS21919WDG22	. CLAMP								01
45	MS35207-263	. SCREW								01
46	NAS1149C0332R	. WASHER								01
47	MS21042L3	. NUT								01
- 47A	NAS1291-3	. NUT-ALT FOR MS21042L3								01
		—*—								
48	2655001-18	. ADAPTER								01
49	204090-17	. BREATHER PAD						V00736		03
50	2655001-17	. SEPARATOR WELD ASSY								01
51	AS5174J0404	. UNION						V81343		01
52	AE3663161E0134	. HOSE ASSY								01
- 53	2655001-15	. ORIFICE ASSY								01
54	JETA1875120D	. RESTRICTOR								01
55	2655001-14	. ELBOW								01

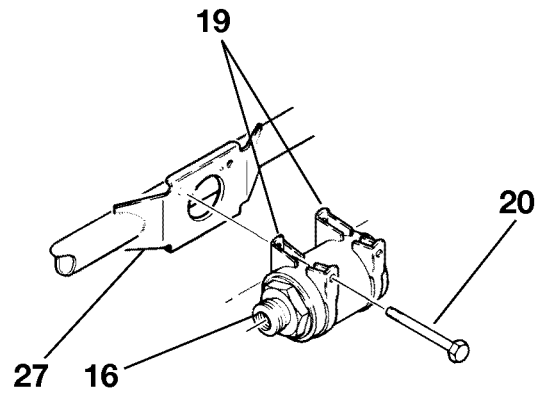
- ITEM NOT ILLUSTRATED

CESSNA®
MODEL 208
 ILLUSTRATED PARTS CATALOG

A24551

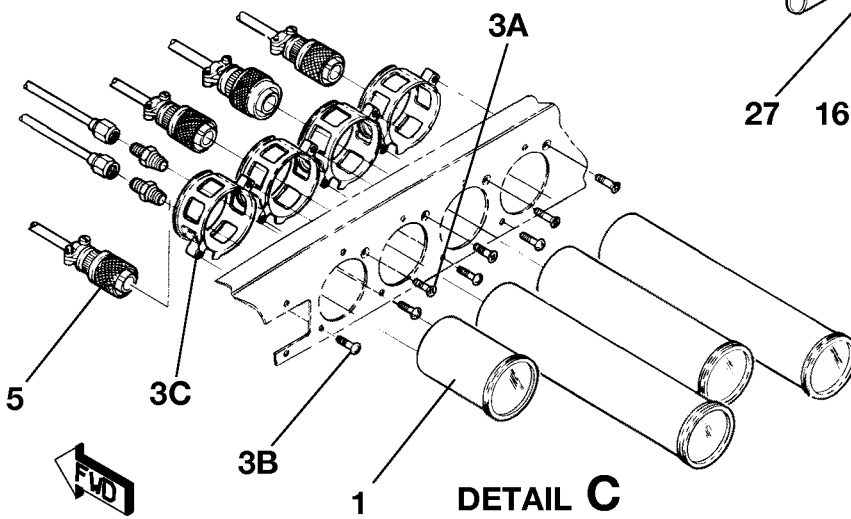


DETAIL A



DETAIL B

AIRPLANES 20800007,
 20800009, AND 20800011



DETAIL C

ELECTRICAL TORQUE INDICATING SYSTEM
 FIGURE 01 (SHEET 1)

26551006
 A26552003
 B26552004
 C26552002

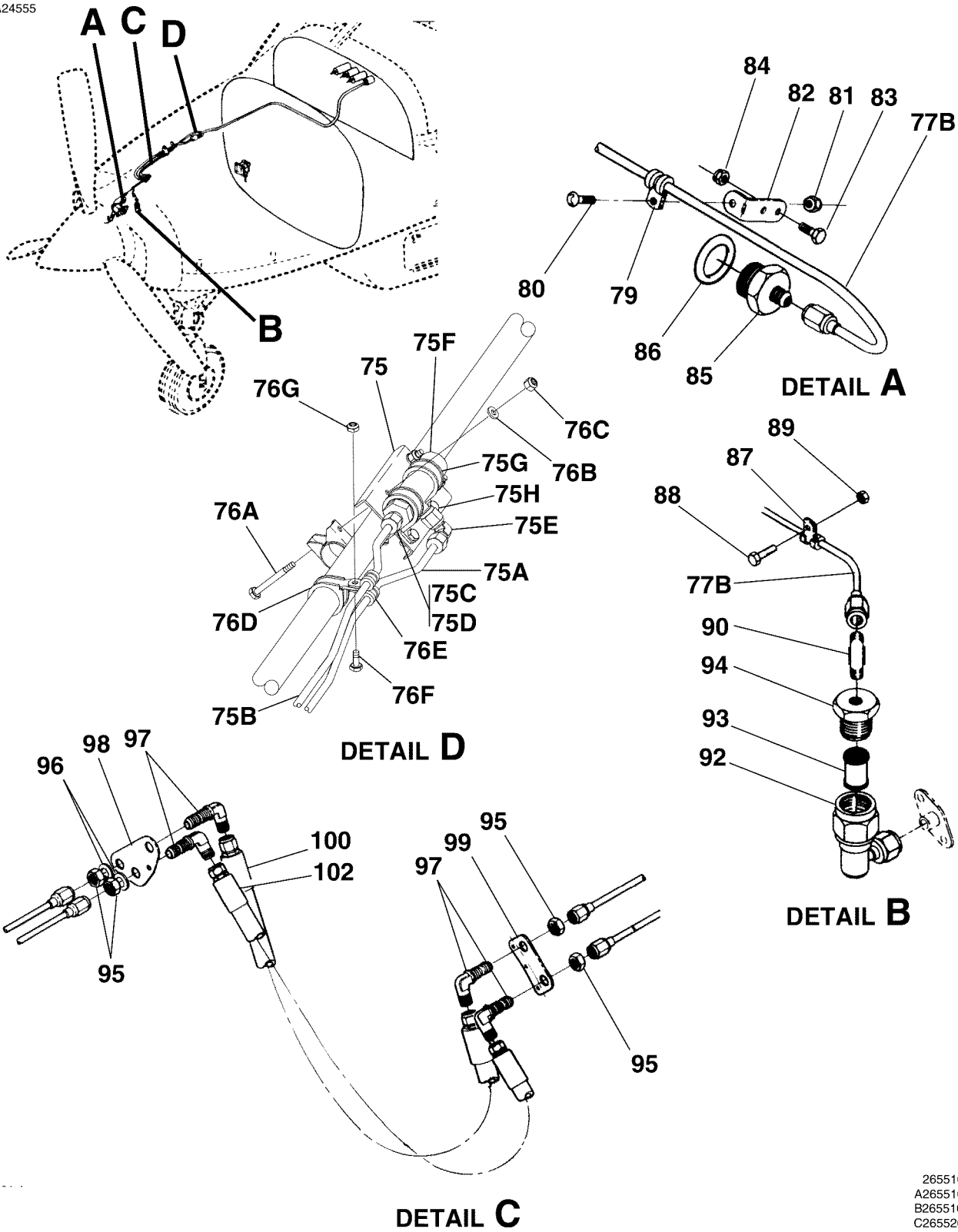
CESSNA®
MODEL 208
ILLUSTRATED PARTS CATALOG

FIG ITEM	PART NUMBER	NOMENCLATURE	UNITS PER ASSY			
			1	2	3	4
01		ELECTRICAL TORQUE INDICATING SYSTEM				RF
-						
1	SR2AW	. INDICATOR-ELECTRICAL TORQUE	V61349	0001	0083	01
- 2	SE-OC2H	. INDICATOR-ELECTRICAL TORQUE	V61349	0084	& ON	01
				B0001	B0229	
- 3	10263N01W00	. INDICATOR-ELECTRICAL TORQUE		B0230	& ON	01
3A	MS24693BB50	. SCREW-INDICATOR ATTACH				01
3B	MS35214-43	. SCREW-INDICATOR ATTACH				01
3C	MS28042-1A	. CLAMP-INDICATOR ATTACH				01
4	S2654-4	. CONNECTOR ASSY-ELECTRICAL TORQUE INDICATOR				01
5	S2654-4	. CONNECTOR ASSY-ELECTRICAL TORQUE INDICATOR		0001	0083	01
- 6	MS3126E12-10S	. CONNECTOR-ELECTRICAL TORQUE INDICATOR				01
7	2653029-3	. LINE ASSY-TORQUE VENT TRANS TO HOSE		0001	0083	01
- 8	2653029-6	. LINE ASSY-TORQUE VENT TRANS TO HOSE				01
9	2653029-2	. LINE ASSY-TORQUE PRESS TRANS TO HOSE				01
10	MS21919DG16	. CLAMP				01
11	MS21919WDG4	. CLAMP				02
12	MS35207-265	. SCREW				01
13	MS20364-1032C	. NUT				01
14	MS24392D4	. UNION				02
15	MS29512-04	. O-RING				02
16	ST502P	. TRANSMITTER-TORQUE PRESSURE	V61349	0001	0083	01
- 17	PTD102J	. TRANSMITTER-TORQUE PRESSURE	V61349	0084	0199	01
				B0001	B0255	
- 18	10298T01W00	. TRANSMITTER-TORQUE PRESSURE ALT FOR PTD-102J	V61349	B0256	B1049	01
- 18A	MS20365-1032C	. NUT		0007	0199	02
				B0001	B0541	
- 18B	MS21044N3	. NUT		B542	B1049	04
19	S1601-16	. CLAMP		0007	0199	02
				B0001	B0541	
20	AN3-14A	. BOLT		0007	0199	02
				B0001	B0541	
- 21	2653029-200	. CLAMP ASSY		0008	0008	02
				0010	0010	
				0012	0012	
				0084	& ON	
				B0001	B0541	
22	MS21919WDG36	. CLAMP		0008	0008	02
				0010	0010	
				0012	0083	
- 23	MS21919DG32	. CLAMP		0084	0199	02
				B0001	B1049	
- 23A	2653043-1	. PLATE ASSY-TRANSMITTER CLAMP		B0542	B1049	01
- 23B	2653043-2	. CLAMP ASSY-TRANSMITTER		B0542	B1049	04
- 23C	AN3-4A	. BOLT		B0542	B1049	02
24	AN3-14A	. BOLT		0008	0008	02
				0010	0010	
				0012	0012	
				B0001	B0541	
- 24A	AN3-16A	. BOLT		B0542	B1049	04
- 25	NAS1149C0332R	. WASHER		0007	0199	02
				B0001	B0541	
- 26	NAS1149F0363P	. WASHER		B0542	B1049	10
27		. ENGINE MOUNT REFER TO 71-20-00 FIGURE 01				RF

- ITEM NOT ILLUSTRATED

CESSNA®
MODEL 208
 ILLUSTRATED PARTS CATALOG

A24555



ELECTRICAL TORQUE INDICATING SYSTEM
 FIGURE 01 (SHEET 2)

26551006
 A26551001
 B26551003
 C26552001
 D2618T1374

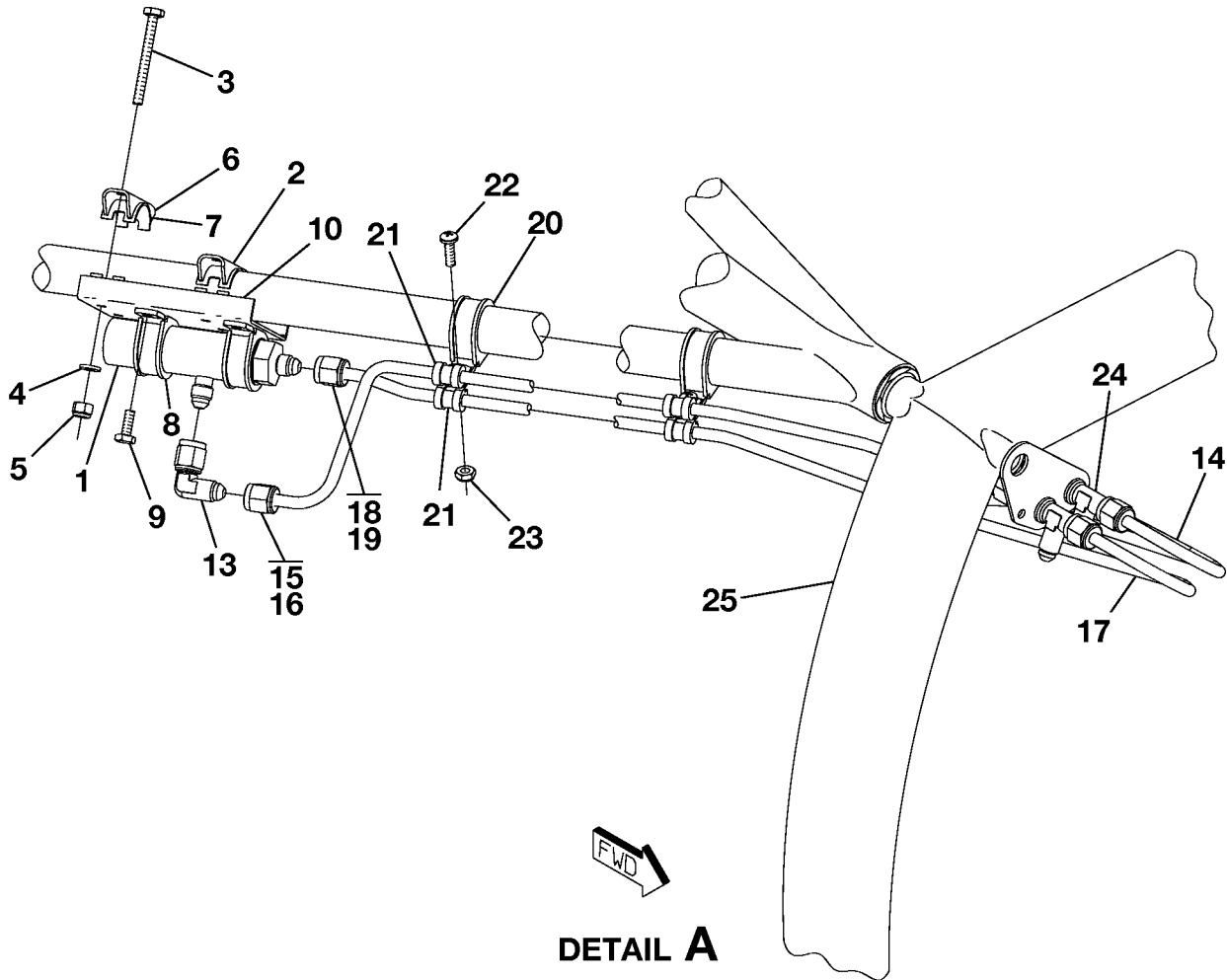
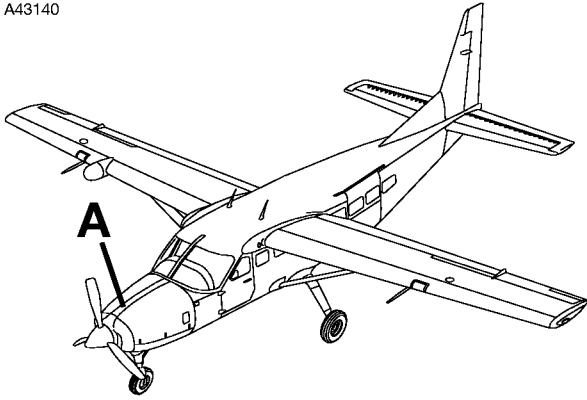
CESSNA®
MODEL 208
ILLUSTRATED PARTS CATALOG

FIG ITEM	PART NUMBER	NOMENCLATURE	UNITS PER ASSY		
			1	2	3
01					
75	2653048-3	. PLATE ASSEMBLY	B1050	& ON	01
75A	2653048-11	. TUBE ASSEMBLY	B1050	& ON	01
75B	2653048-10	. TUBE ASSEMBLY	B1050	& ON	01
75C	AN818-4J	. NUT	B1050	& ON	02
75D	AS5176J04	. SLEEVE	B1050	& ON	02
75E	AS4407J0404	. ELBOW	B1050	& ON	01
75F	APT51CC-75D	. TRANSDUCER DELTA P.	B1050	& ON	01
		ATTACHING PARTS			
75G	MS21919WDG16	. CLAMP	B1050	& ON	02
75H	AN3-4A	. BOLT	B1050	& ON	02
		—*—			
- 76	2653043-2	. CLAMP ASSY	B1050	& ON	04
76A	AN3-17A	. BOLT	B1050	& ON	04
76B	NAS1149F0363P	. WASHER	B1050	& ON	04
76C	MS21044N3	. NUT	B1050	& ON	04
76D	MS21919WDG16	. CLAMP	B1050	& ON	02
76E	MS21919WDG4	. CLAMP	B1050	& ON	04
76F	MS35207-265	. SCREW	B1050	& ON	02
76G	MS21083N3	. NUT	B1050	& ON	02
- 77	2600101-56	. LINE ASSY-TORQUE VENT BRACKET TO SEPARATOR FSO 2600101-22.	0001	0191	NP
			B0001	B0221	
- 77A	2600101-22	. LINE ASSY-TORQUE VENT BRACKET TO SEPARATOR	0192	& ON	01
			B0222	& ON	
77B	2600101-55	. LINE ASSY-TORQUE PRESS BRACKET TO REDUCER FSO 2600101-21	0001	0191	NP
			B0001	B0221	
- 78	2600101-21	. LINE ASSY-TORQUE PRESS BRACKET TO REDUCER	0192	& ON	01
			B0222	& ON	
79	MS21919WDG4	. CLAMP			01
		ATTACHING PARTS			
80	MS35207-264	. SCREW			01
81	MS21044N3	. NUT			01
		—*—			
82	S2300-24	. BRACKET			01
		ATTACHING PARTS			
83	AN3-3A	. BOLT			01
84	MS21044N3	. NUT			01
		—*—			
85	5950017-11	. REDUCER ASSY-TORQUE PRESS			01
86	M83248/1-213	. O-RING			01
87	MS21919WDG4	. CLAMP			01
		ATTACHING PARTS			
88	AN3-3A	. BOLT			01
89	MS21044N3	. NUT			01
		—*—			
90	MS20822-4	. ELBOW			01
- 91	5950034-15	. SEPARATOR ASSY-TORQUE VENT			01
92	5950034-2	. BODY-SEPARATOR			01
93	204090-17	. FILTER ELEMENT ASSY-SEPARATOR	V00736		01
94	5950034-7	. ADAPTER-SEPARATOR			01
95	AS5178-04	. NUT			04
96	NAS1149F0732P	. WASHER			02
97	AN833-4	. ELBOW			04
98	2650081-1	. BRACKET-TORQUE LINE ATTACH AFT			01
99	2650081-2	. BRACKET-TORQUE LINE ATTACH FWD			01
100	S2808-4-0113	. HOSE ASSY-TORQUE VENT BRACKET TO BRACKET			01
- 101	AE3663161E0113	. HOSE ASSY-TORQUE VENT BRACKET TO BRACKET ALT FOR	V00624		01
		S2808-4-0113			
102	S2808-4-0113	. HOSE ASSY-TORQUE PRESS BRACKET TO BRACKET			01
- 103	AE3663161E0113	. HOSE ASSY-TORQUE PRESS BRACKET TO BRACKET ALT FOR	V00624		01 R
		S2808-4-0113			

- ITEM NOT ILLUSTRATED

CESSNA®
MODEL 208
ILLUSTRATED PARTS CATALOG

A43140



2610T7005
A2614T1365

TORQUE TRANSMITTER INSTALLATION
FIGURE 02 (SHEET 1)

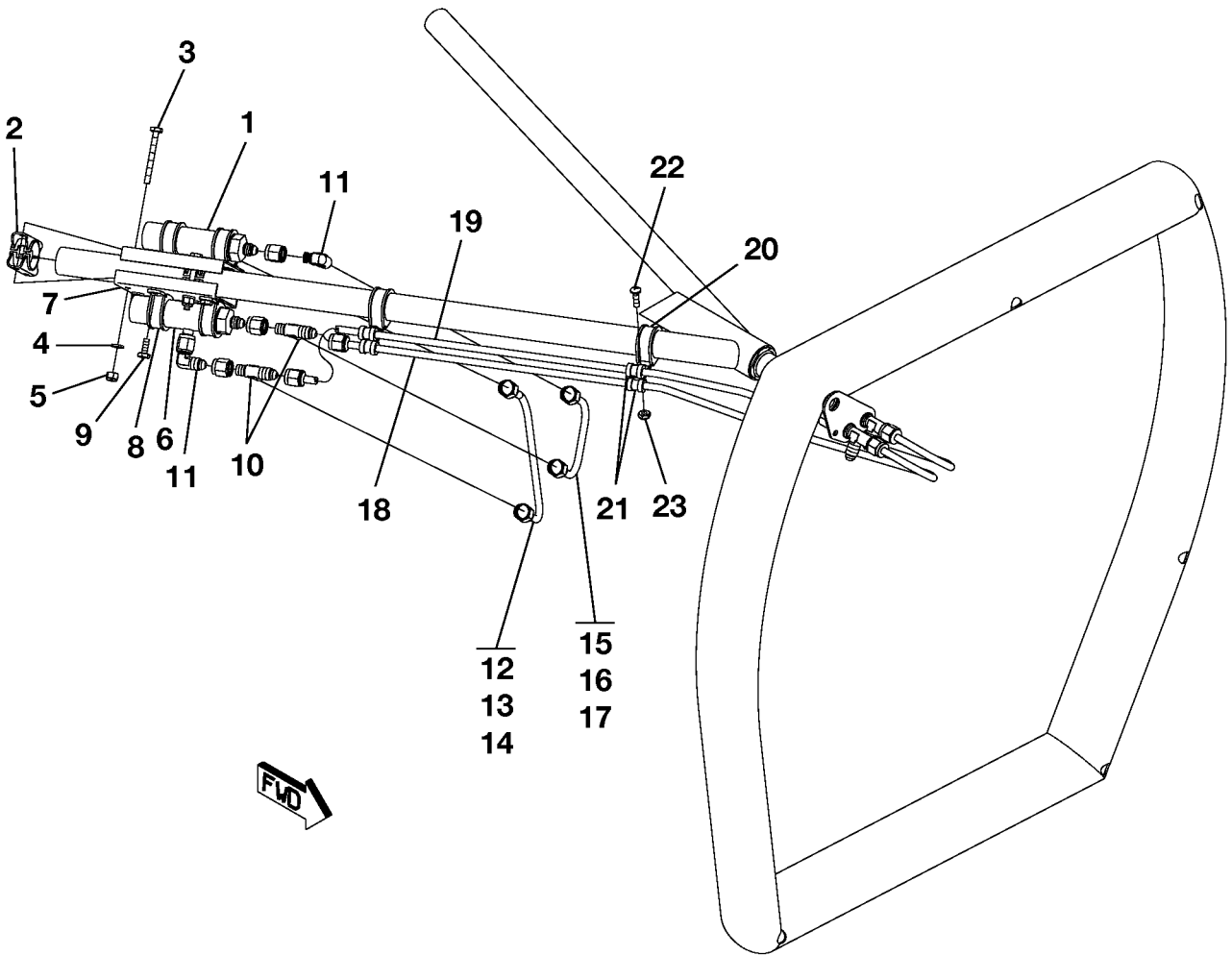
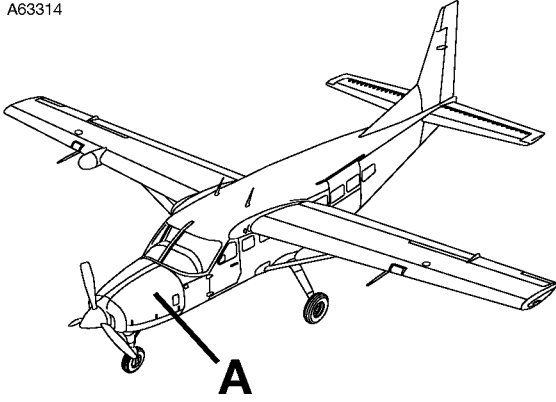
CESSNA®
MODEL 208
ILLUSTRATED PARTS CATALOG

FIG ITEM	PART NUMBER	NOMENCLATURE	UNITS PER ASSY			
			1 2 3 4 5 6 7			
02		TORQUE TRANSMITTER INSTALLATION				
-				0382	0499	RF R
				B1087	B1999	
1	APTE51C-70D	. TRANSDUCER FSO APTE51CF-70D V34345				NP
- 1A	APTE51CF-70D	. TRANSDUCER SPARES ONLY REFER TO NOTE 1 V34345				01
2	2653043-2	. CLAMP ASSY				04
		. ATTACHING PARTS				
3	AN3-17A	. BOLT				04
4	NAS1149F0363P	. WASHER				04
5	MS21044N3	. NUT				04
		. * _				
6	2653043-4	. CHANNEL				01
7	2653043-5	. NEST				01
		. ATTACHING PARTS				
8	MS21919WDG16	. CLAMP				02
9	AN3-4A	. BOLT				02
		. * _				
10	2653048-3	. PLATE ASSEMBLY				01
- 11	2653048-2	. CHANNEL				01
- 12	MS21055L3	. NUTPLATE				02
13	AS4407J0404	. ELBOW ASSY				01
14	2653048-13	. TUBE ASSEMBLY				01
15	AN818-4J	. NUT				02
16	AS5176J04	. SLEEVE				02
- 16A	MS20819-4J	. SLEEVE ALT FOR AS5176J04				02
17	2653048-7	. TUBE ASSEMBLY				01
18	AN818-4J	. NUT				02
19	AS5176J04	. SLEEVE				02
- 19A	MS20819-4J	. SLEEVE ALT FOR AS5176J04				02
20	MS21919WDG16	. CLAMP				02
		. ATTACHING PARTS				
21	MS21919WDG4	. CLAMP				04
22	MS35207-265	. SCREW				02
23	MS21083N3	. NUT				02
		. * _				
24	AN804-4	. TEE				02
25		. ENGINE MOUNT REFER TO 71-20-00 FIGURE 01				RF
- 26	2654032-9	. CONNECTOR DOUBLER-FIREWALL				01

NOTE 1—AIRPLANES -0382 THRU -0499 AND -B1087 THRU -B1999, AND AIRPLANES -0372 THRU -0415, -0417 THRU 0499, -B1044 THRU -B1189, -B1191 THRU -B1215, AND -B1217 THRU -B1999 INCORPORATING CAB10-1.

CESSNA®
MODEL 208
ILLUSTRATED PARTS CATALOG

A63314



DETAIL A

TORQUE TRANSMITTER INSTALLATION - FDR & CVR
FIGURE 03 (SHEET 1)

2610T7005
A2618T1410

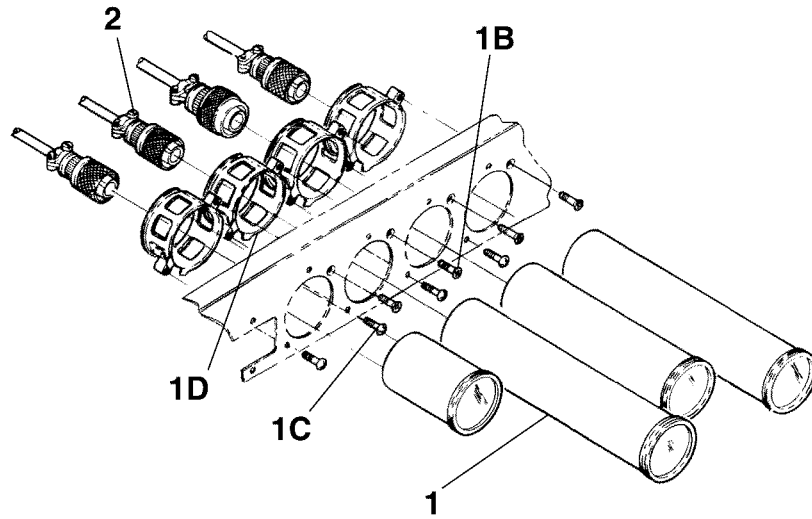
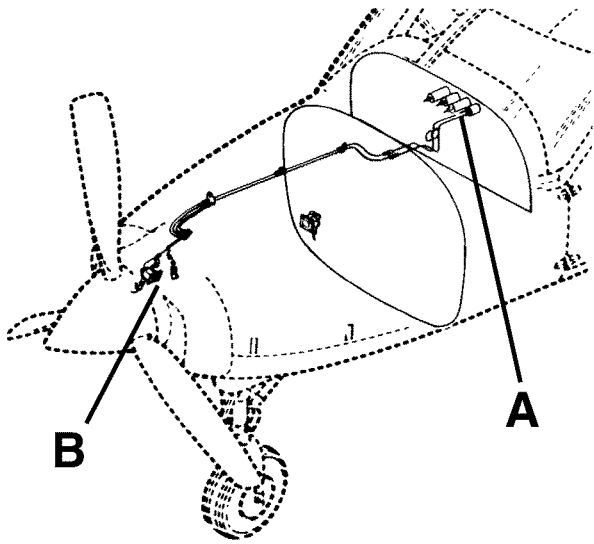
CESSNA®
MODEL 208
ILLUSTRATED PARTS CATALOG

FIG ITEM	PART NUMBER	NOMENCLATURE	UNITS	
			PER	ASSY
03				
-		TORQUE TRANSMITTER INSTALLATION - FDR & CVR	0417 & ON	RF R
			B1052 & ON	
1	APTE51C-65D	. TRANSDUCER DELTA P.		01
		. ATTACHING PARTS		
2	2653043-2	. CLAMP ASSY		04
3	AN3-17A	. BOLT		04
4	NAS1149F0363P	. WASHER		04
5	MS21044N3	. NUT		04
		—*—		
6	APTE51C-70D	. TRANSDUCER FSO APTE51CF-70D	V34345	NP
- 6A	APTE51CF-70D	. TRANSDUCER SPARES ONLY	V34345	01
		. ATTACHING PARTS		
7	2653048-3	. PLATE ASSEMBLY		02
8	MS21919WDG16	. CLAMP		04
9	AN3-4A	. BOLT		04
		—*—		
10	AS4410J040404	. TEE ASSY		02
11	AS4407J0404	. ELBOW ASSY		02
12	2653048-16	. TUBE ASSY-OIL VENT		01
		. ATTACHING PARTS		
13	AN818-4J	. NUT		02
14	MS20819-4J	. SLEEVE		02
		—*—		
15	2653048-15	. TUBE ASSY-OIL PRESSURE		01
		. ATTACHING PARTS		
16	AN818-4J	. NUT		02
17	MS20819-4J	. SLEEVE		02
		—*—		
18	2653048-7	. TUBE ASSEMBLY		01
19	2653048-13	. TUBE ASSEMBLY		01
		. ATTACHING PARTS		
20	MS21919WDG16	. CLAMP		02
21	MS21919WDG4	. CLAMP		04
22	MS35207-265	. SCREW		02
23	MS21083N3	. NUT		02
		—*—		

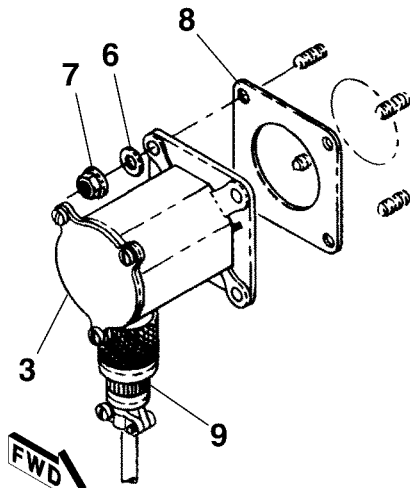
- ITEM NOT ILLUSTRATED

CESSNA®
MODEL 208
 ILLUSTRATED PARTS CATALOG

A24557



DETAIL A



DETAIL B

PROPELLER RPM INDICATING SYSTEM
 FIGURE 01 (SHEET 1)

26551004
 A2655R2002
 B26551002

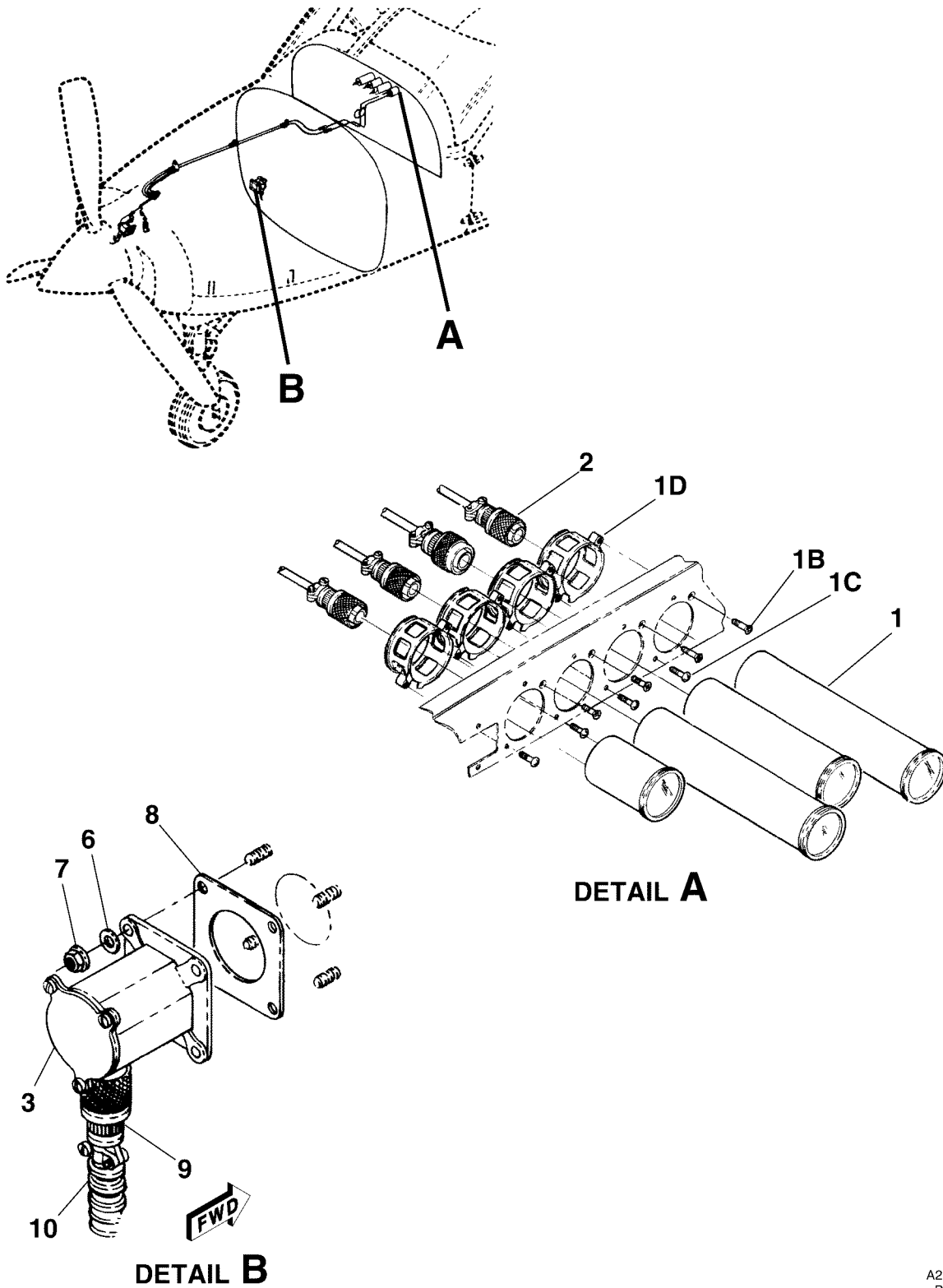
CESSNA®
MODEL 208
 ILLUSTRATED PARTS CATALOG

FIG ITEM	PART NUMBER	NOMENCLATURE	UNITS PER ASSY		
			1	2	3
01		PROPELLER RPM INDICATING SYSTEM			RF
-					
1	2606014-1	. INDICATOR-PROP RPM FSO 2606014-2	0001	0373	01
- 1A	2606014-2	. INDICATOR-PROP RPM	B0001	B1049	01
			0374	0499	
			B1050	B1999	
		ATTACHING PARTS			
1B	MS24693BB50	. SCREW	0001	0499	01
			B0001	B1999	
1C	MS35214-43	. SCREW	0001	0499	01
			B0001	B1999	
1D	MS28042-1A	. CLAMP	0001	0499	01
			B0001	B1999	
		—*—			
2	S2654-1	. CONNECTOR-PROP RPM INDICATOR	0001	0499	01
			B0001	B1999	
3	9910378-1	. GENERATOR-TACH ALT FOR 9912034-1			01 R
- 3A	9912034-1	. GENERATOR-TACH ALT FOR 9910378-1			01 R
- 4		. DELETED-NOT USED			
- 5		. DELETED-NOT USED			
		ATTACHING PARTS			
6	NAS1149F0432P	. WASHER			04
7	MS21042L4	. NUT			04
		—*—			
8	S3346-1	. GASKET			01
9	S2654-3	. CONNECTOR ASSY-PROP RPM TACH GENERATOR			01

- ITEM NOT ILLUSTRATED

CESSNA®
MODEL 208
ILLUSTRATED PARTS CATALOG

A24558



GAS GENERATOR RPM INDICATOR SYSTEM
FIGURE 01 (SHEET 1)

26551004
A2655R2002
B26551002

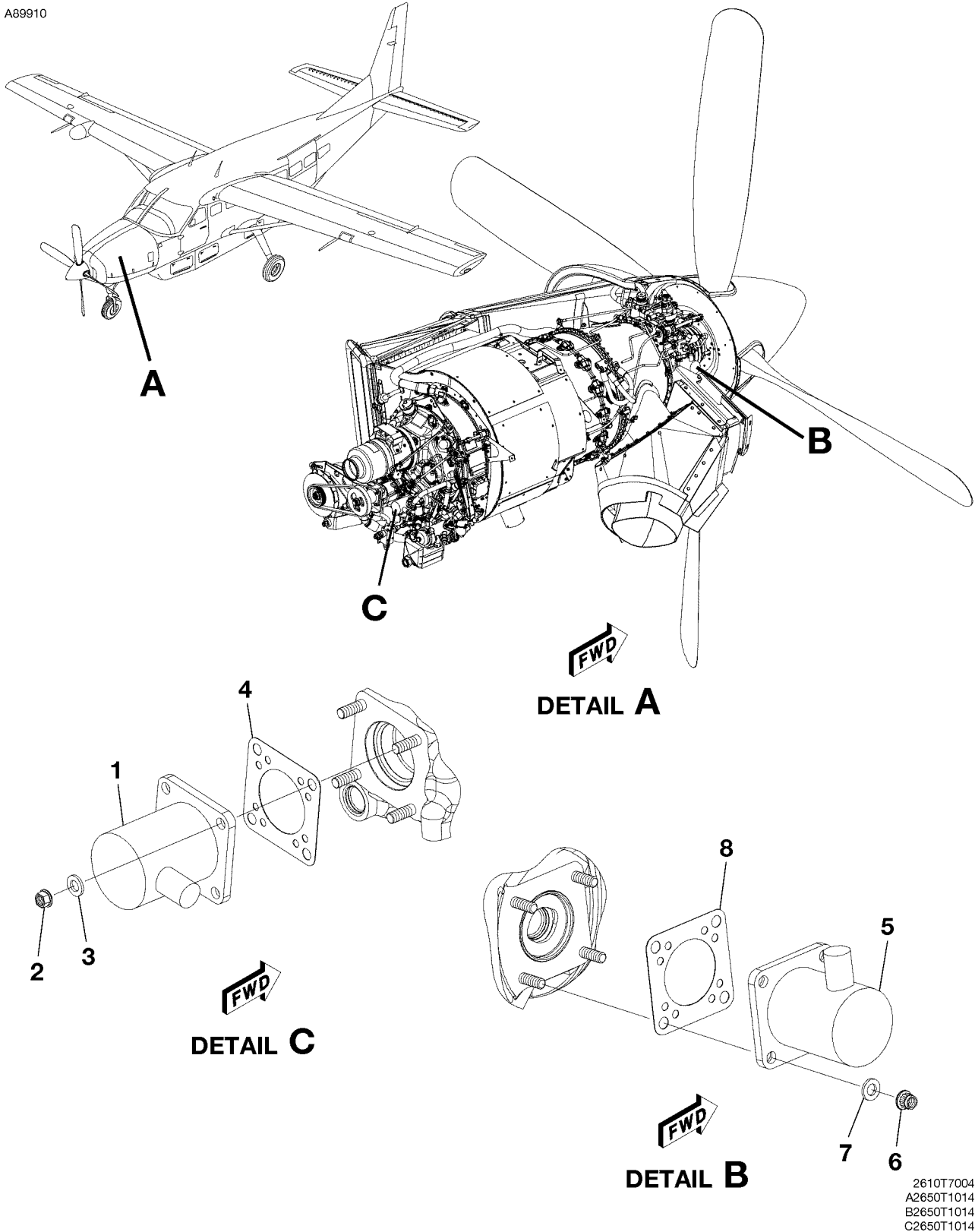
CESSNA®
MODEL 208
 ILLUSTRATED PARTS CATALOG

FIG ITEM	PART NUMBER	NOMENCLATURE	UNITS PER ASSY		
			1	2	3
01					
-		GAS GENERATOR RPM INDICATOR SYSTEM			RF
1	2606013-1	. INDICATOR-PERCENT RPM FSO 2606013-2	0001	0373	01
- 1A	2606013-2	. INDICATOR-PERCENT RPM.	B0001	B1049	01
		ATTACHING PARTS	0374	0499	01
1B	MS24693BB50	. SCREW	B1050	B1999	
1C	MS35214-43	. SCREW	0001	0499	01
1D	MS28042-1A	. CLAMP	B0001	B1999	01
		—*—	0001	0499	01
2	S2654-1	. CONNECTOR-PERCENT RPM INDICATOR.	B0001	B1999	
3	9910378-1	. GENERATOR-TACH ALT FOR 9912034-1.			01 R
- 3A	9912034-1	. GENERATOR-TACH ALT FOR 9910378-1.			01 R
- 4		. DELETED-NOT USED			
- 5		. DELETED-NOT USED			
		ATTACHING PARTS			
6	NAS1149F0432P	. WASHER			04
7	MS21042L4	. NUT			04
		—*—			
8	S3346-1	. GASKET			01
9	S2654-3	. CONNECTOR ASSY-PERCENT RPM TACH GENERATOR.			01
10	S2562-2	. TUBING BKI			AR

- ITEM NOT ILLUSTRATED

CESSNA®
MODEL 208
ILLUSTRATED PARTS CATALOG

A89910



TACHOMETER GENERATOR INSTALLATION
FIGURE 01 (SHEET 1)

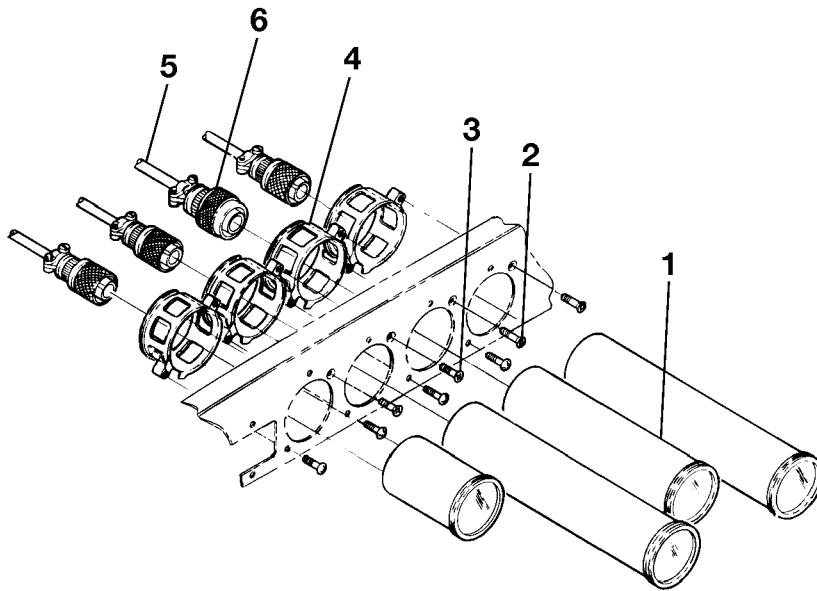
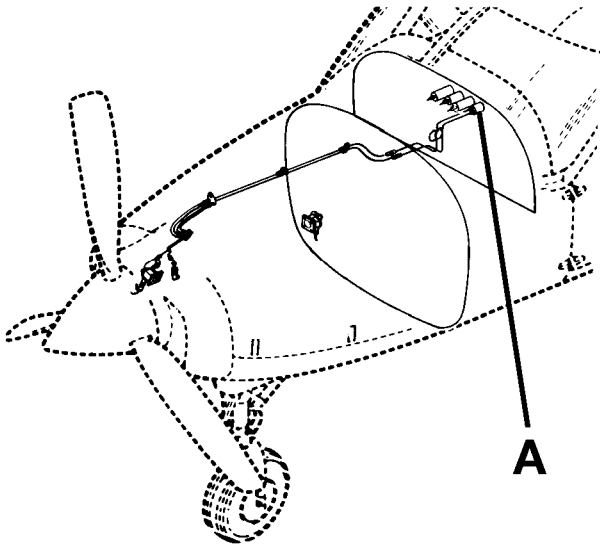
CESSNA®
MODEL 208
 ILLUSTRATED PARTS CATALOG

FIG ITEM	PART NUMBER	NOMENCLATURE							UNITS PER ASSY
		1	2	3	4	5	6	7	
01		TACHOMETER GENERATOR INSTALLATION							B5000 & ON RF
-		TACHOMETER GENERATOR UN033							01
1	9912034-1	ATTACHING PARTS							
2	NAS1149C0432R	WASHER							04
3	MS21042L4	NUT							04
		*—							
4	S3346-1	GASKET							01
5	9912034-1	TACHOMETER GENERATOR UN034							01
		ATTACHING PARTS							
6	NAS1149C0432R	WASHER							04
7	MS21042L4	NUT							04
		*—							
8	S3346-1	GASKET							01

- ITEM NOT ILLUSTRATED

CESSNA®
MODEL 208
ILLUSTRATED PARTS CATALOG

A24560



DETAIL A

INTER-TURBINE TEMPERATURE INDICATOR
FIGURE 01 (SHEET 1)

2655R1004
A2655R2002

CESSNA®
MODEL 208
 ILLUSTRATED PARTS CATALOG

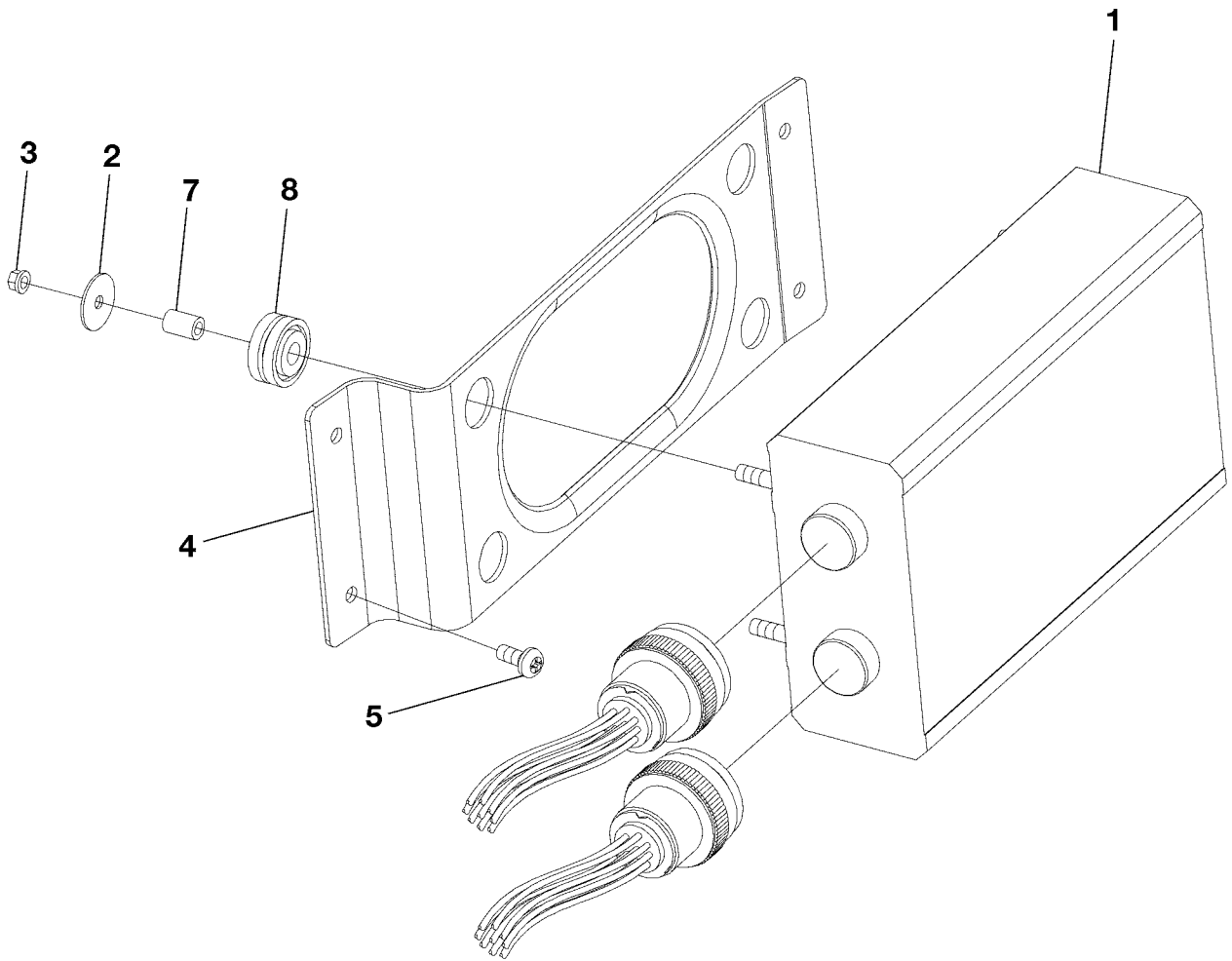
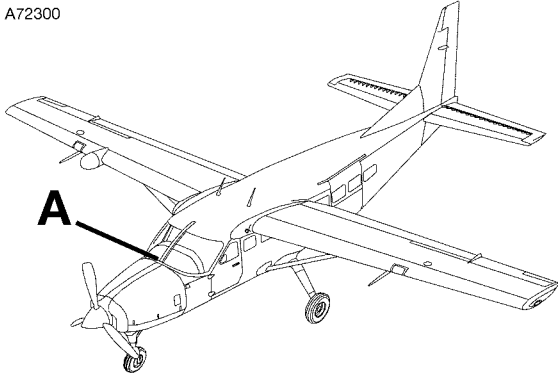
FIG ITEM	PART NUMBER	NOMENCLATURE	UNITS PER ASSY		
			1	2	3
01		INTER-TURBINE TEMPERATURE INDICATOR	0001	0499	RF
-			B0001	B1999	
1	2606012-1	. INDICATOR-INTER-TURBINE TEMPERATURE FSO 2606012-2 REFER TO NOTE 1.	0001	0403	NP R
- 1A	2606012-2	. INDICATOR-INTER-TURBINE TEMPERATURE REFER TO NOTE 1	B0001	B1193	
			0404	0499	01
			B1193	B1999	
		ATTACHING PARTS			
2	MS24693BB50	. SCREW			01
3	MS35214-43	. SCREW			01
4	MS28042-1A	. CLAMP			01
		—*—			
5	2670014-1	. CABLE ASSY-INTER-TURBINE TEMPERATURE			01
6	S2654-15	. CONNECTOR INTER-TURBINE TEMP INDICATOR			01

NOTE 1—AIRPLANES -0404 THRU -0499 AND -B1193 THRU -B1999, AND AIRPLANES -0001 THRU -0403 AND -B0001 THRU -B1193
 INCORPORATING SK208-170.

R

CESSNA®
MODEL 208
ILLUSTRATED PARTS CATALOG

A72300



DETAIL A

2610T7005
A2614T1413

ALTAIR ENGINE TREND MONITORING (ETM) COMPONENT INSTALLATION
FIGURE 01 (SHEET 1)

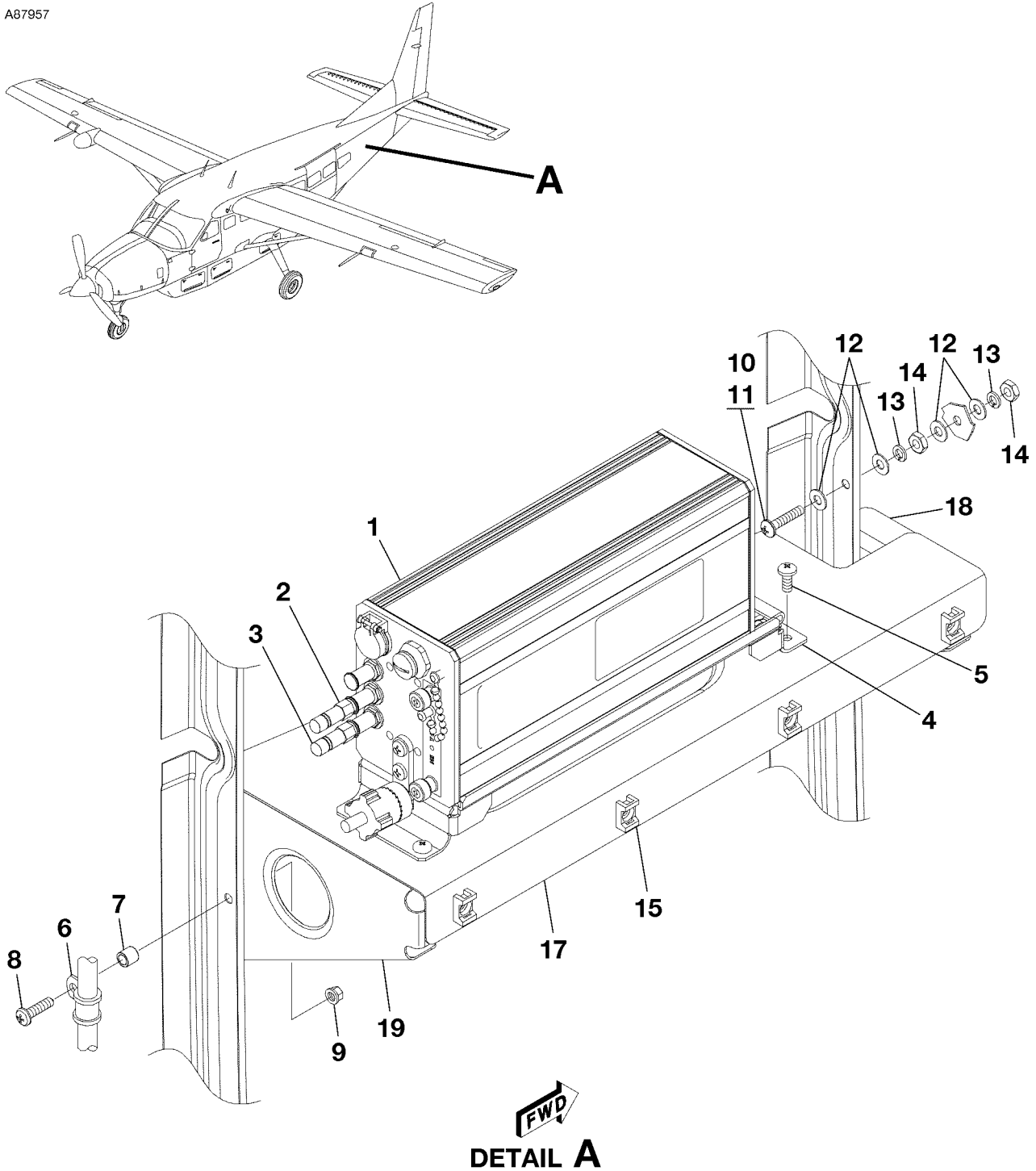
CESSNA®
MODEL 208
 ILLUSTRATED PARTS CATALOG

FIG ITEM	PART NUMBER	NOMENCLATURE	UNITS PER ASSY		
			1	2	3
01		ALTAIR ENGINE TREND MONITORING (ETM) COMPONENT INSTALLATION	0500	& ON	RF
-			B2000	B4999	
1	DAAS-A-010-1	. ADAS-D PROCESSOR FSO S3100-519 UF001 V1YQ22	0500	0517	NP
			B2000	B2159	
- 1A	S3100-519	. ADAS-D PROCESSOR-DAAS-A-010-1 (SW V5.0.6) UF001	0518	& ON	01
			B2160	& ON	
		ATTACHING PARTS			
2	S1450-1-10-032	. WASHER			04
3	MS21042-06	. NUT			04 R
- 3A	NAS1291X06	. NUT ALT FOR MS21042-06			04
		—*—			
4	2670156-3	. PROCESSOR BRACKET			01
		ATTACHING PARTS			
5	MS35206-243	. SCREW			04
		—*—			
- 6	ADAS-D-067-1	. MOUNTING KIT V1YQ22			04
7	940-00019	. . FERRULE V1YQ22			01
8	J-3112-5-1	. . SHOCK MOUNT V1YQ22			01
- 9	ADAS-C-031-1	. DOWNLOAD PORT ASSY JI007			01

- ITEM NOT ILLUSTRATED

CESSNA®
MODEL 208
ILLUSTRATED PARTS CATALOG

A87957



FAST ENGINE TREND MONITORING (ETM) COMPONENT INSTALLATION
FIGURE 02 (SHEET 1)

2610T7004
A2618T1472

CESSNA®
MODEL 208
ILLUSTRATED PARTS CATALOG

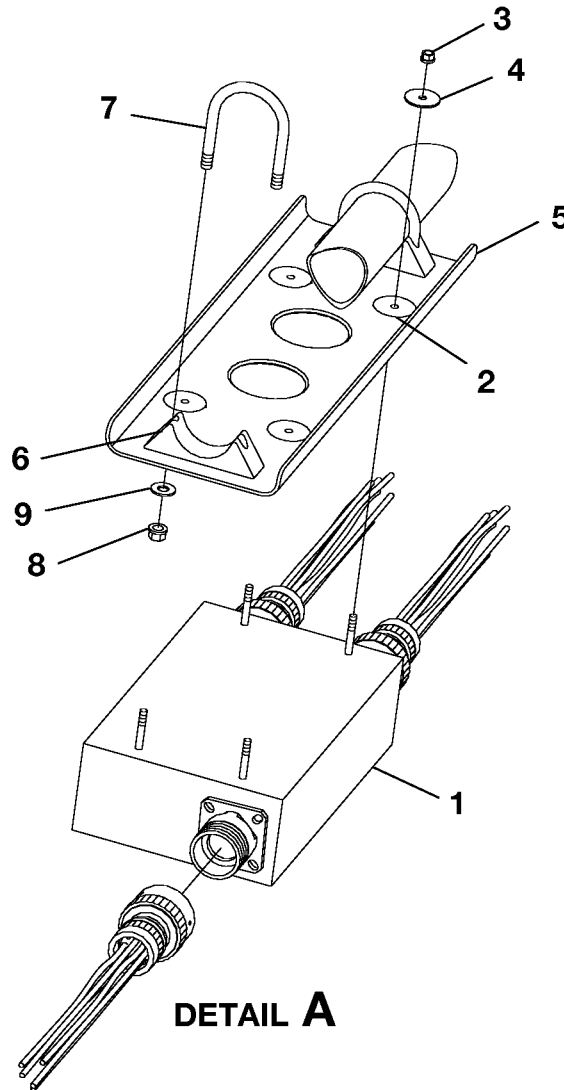
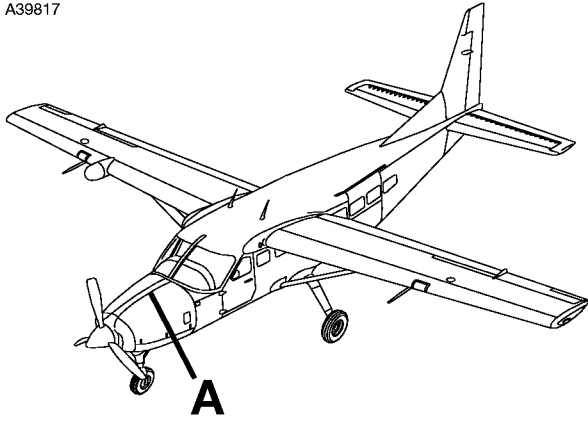
FIG ITEM	PART NUMBER	NOMENCLATURE	UNITS		
			1	2	PER ASSY
02					
-		FAST ENGINE TREND MONITORING (ETM) COMPONENT INSTALLATION		B5000	& ON RF
1	FAST-A-010-4	. FAST ETM PROCESSOR YT009 REFER TO NOTE 1 V1YQ22		B5000	B5120 01
- 1A	FAST-A-010-4-V1	. FAST ETM PROCESSOR UT001 V1YQ22		B5121	B5430 01
- 1B	FAST-A-010-4-V5	. FAST ETM PROCESSOR UT001 REFER TO NOTE 1 V1YQ22		B5431	& ON 01
2	FAST-D-087-1	. ANTENNA-WLAN STUBBY YT009 V1YQ22		B5000	B5120 01
3	FAST-D-087-1	. ANTENNA-WLAN STUBBY YT010 V1YQ22		B5000	B5120 01
4	FAST-A-042-1	. MOUNT V1YQ22			01
		ATTACHING PARTS			
5	MS27039-1-07	. SCREW			05
		*—			
6	MS21919WDG6	. CLAMP			01
7	NAS43DD3-19FC	. SPACER			01
8	NAS603-12	. SCREW			01
9	MS21042L3	. NUT			01
- 9A	NAS1291-3	. NUT-ALT FOR MS21042L3			01
10	6318104-2	. GROUND STUD INSTALLATION			01
- 10A	9256010-1	. GROUND STUD ASSEMBLY-ALT FOR 6318104-2			01
11	MS35207-266	. SCREW			01
12	NAS1149D0316H	. WASHER			04
13	MS35338-157	. LOCK WASHER			02
14	MS35650-305T	. NUT			02
15	S1741-1	. ANCHOR			04
- 16	2618507-2	. SHELF ASSY			01
17	2618507-3	. SHELF			01
18	2618507-4	. SHELF SUPPORT-AFT			01
19	2618507-5	. SHELF SUPPORT-FWD			01

NOTE 1—AIRPLANES -B5431 AND ON AND AIRPLANES -B5000 THRU -B5120 INCORPORATING CAB-77-01.

R

CESSNA®
MODEL 208
ILLUSTRATED PARTS CATALOG

A39817



2610T7005
A2618T1363

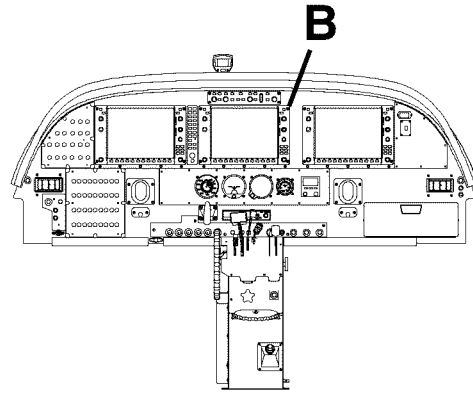
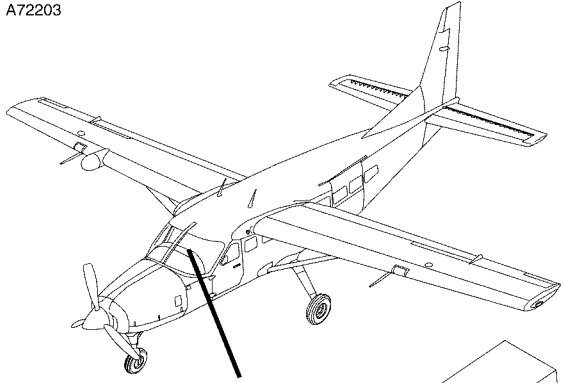
ADAS PLUS PROCESSOR INSTALLATION
FIGURE 03 (SHEET 1)

CESSNA®
MODEL 208
 ILLUSTRATED PARTS CATALOG

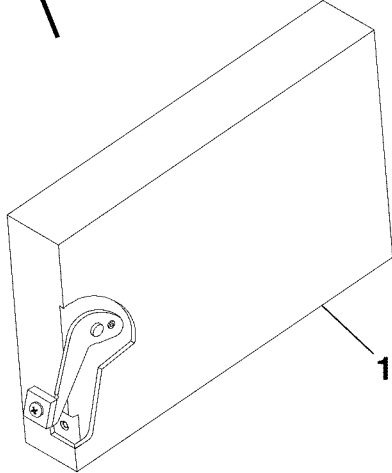
FIG ITEM	PART NUMBER	NOMENCLATURE							UNITS PER ASSY
		1	2	3	4	5	6	7	
03		ADAS PLUS PROCESSOR INSTALLATION							
-								0382 & ON	RF
								B1087 & ON	
1	EMU-A-010-3	.	ADAS PLUS PROCESSOR	V1YQ22	01
		.	ATTACHING PARTS		
2	P01005	.	SHOCK MOUNT	V76005	04
3	MS21042-06	.	NUT		04
4	S1450-1-10-032	.	WASHER		04
		.	—*—		
5	2654032-2	.	PROCESSOR BRACKET		01
		.	ATTACHING PARTS		
6	2654032-8	.	CLAMP HALF		02
7	2601260-5	.	CLAMP BOLT		02
8	MS21043-3	.	NUT		04
9	NAS1149F0332P	.	WASHER		04
		.	—*—		

CESSNA®
MODEL 208
ILLUSTRATED PARTS CATALOG

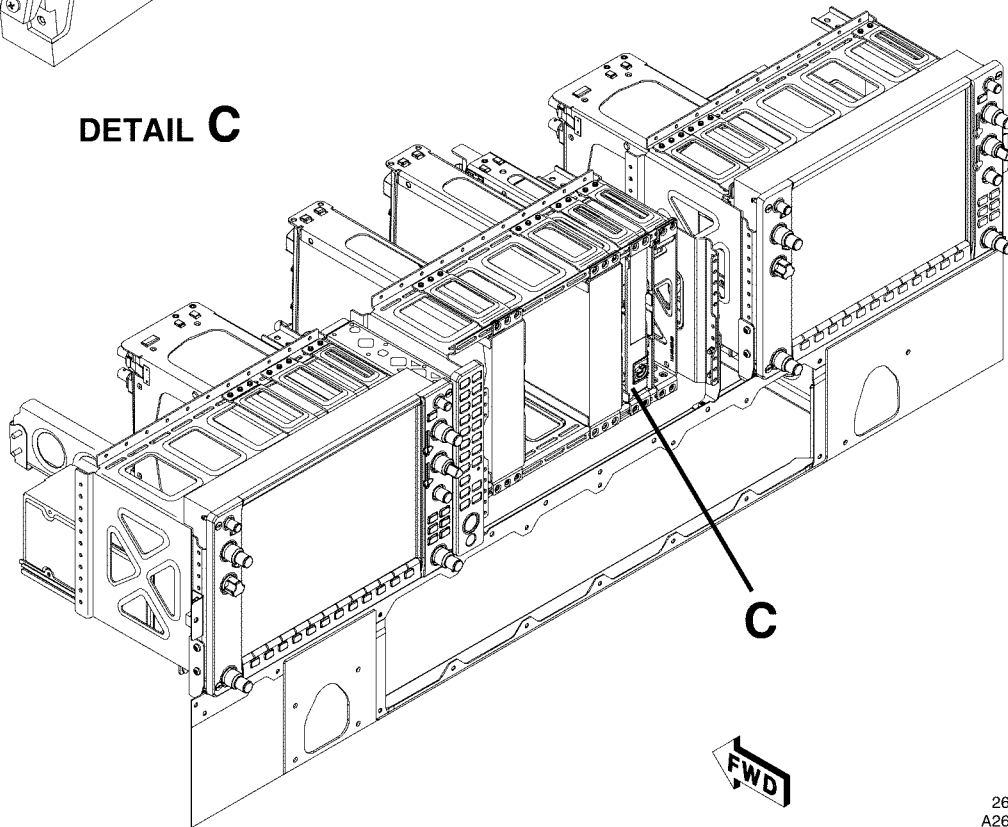
A72203



DETAIL A



DETAIL C



DETAIL B

**GEA-71 ENGINE INTERFACE UNIT INSTALLATION
FIGURE 01 (SHEET 1)**

2610T7001
A2618T1419
B2618T1419
C7018T1075

CESSNA®
MODEL 208
 ILLUSTRATED PARTS CATALOG

FIG ITEM	PART NUMBER	NOMENCLATURE	UNITS PER ASSY		
			1	2	3
01		GEA-71 ENGINE INTERFACE UNIT INSTALLATION	0500	& ON	RF
-			B2000	& ON	
1	S3100-385	. GEA-71 ENGINE INTERFACE REF 011-00831-00 (MOD 2 AND ON)	0500	00590	01
- 1A	S3100-637	. GEA-71 ENGINE INTERFACE REF 011-00831-00 (MOD 1, 2, AND 3)	B2000	B5329	
- 1B	011-03682-02	. GEA-71B ENHANCED	00591	0650	01 R
- 2	011-00796-00	. BACKPLATE ASSEMBLY GEA-71 V0TRC3	B5330	05500	
			0651	& ON	01 R
			B5501	& ON	
					01

- ITEM NOT ILLUSTRATED